

**SANDELL'S MORTAR WEB**

**Product Description:**

Mortar Web is used in conjunction with flashing and weep devices, to promote proper drainage in cavity wall construction. Mortar Web is placed inside the cavity of the wall to permanently suspend mortar droppings above drainage openings. Mortar Web keeps flashing and weep devices free of mortar collection. The unique design, prevents flashing and weep devices from becoming blocked from mortar droppings. By installing Mortar Web, moisture is allowed to flow unrestricted, and is channeled to the exterior of the structure by way of flashing and weep devices.

Mortar Web is a polymer based geomaterial made of high density polyethylene strands. It is woven into a 90% open mesh weave design proper drainage while suspending mortar collection permanently. The material is unreactive with common building materials, such as PVC, polyethylene, polystyrene, copper, lead, rubberized asphalt and stainless steel. Mortar Web will not absorb or trap mortar, mildew or fungus. Mortar Web was designed to last for the life of the building.

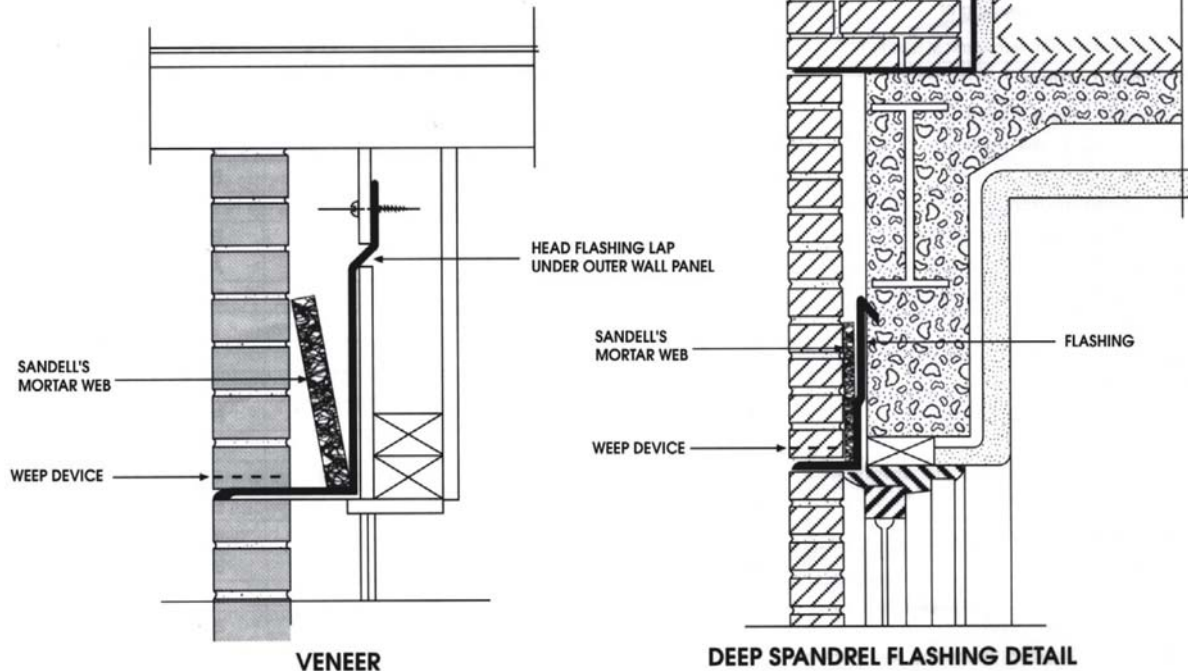
**Size:**

Sandell's Mortar Web is available for 1" and 2" cavity walls. It is 10" - 48" high and is sold in 50' lengths.

**Installation:**

Mortar Web should be used at all flashing locations, such as cavity walls, composite walls, single wythe walls and veneer applications. After the first one or two courses of brick have been set, clean the cavity of any miscellaneous mortar or debris. Once the cavity has been cleared, place one continuous row of Mortar Web in the collar joint or cavity of the wall. The cavity should

not be any wider than an 1/8" of the Mortar Web material being installed. Place Mortar Web on top of the flashing, against the inside outer wythe, at the base of the wall. No adhesives or mechanical Fasteners are necessary when installing Mortar Web, and the mortar does not have to set. Mortar Web is equally effective for masonry, steel, and wood stud cavity wall applications.





# TECHNICAL DATA SHEET

**Warranty:**

Mortar Web carries a manufacturer's warranty of material specification compliance.

**Maintenance:**

Mortar Web should not require maintenance, if installed in accordance with Sandell's specifications and instructions.

**Filing System:**

For more information contact Sandell Construction Solutions directly.

**TECHNICAL ASSISTANCE:**

Call Sandell directly for technical assistance or product questions:

New York: 800.283.3888

Alabama: 877.726-3355

Wisconsin: 800.323-3565



[www.sandellmfg.com](http://www.sandellmfg.com)

**Amendments / Notes:**


Sandell Employee:

Date:

CORPORATE OFFICE  
 NEW YORK  
**Toll Free: 800-283-3888**  
**Fax: 518-357-9757**

BRANCH OFFICE  
 ALABAMA  
**Toll Free: 877-SANDELL**  
**Fax: 205-263-1033**

BRANCH OFFICE  
 WISCONSIN  
**Toll Free: 800-323-3565**  
**Fax: 414-764-6993**